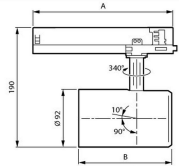


Trade	Flux	CCT	Optic	A (mm)
PSU	205	840	HNB/HMB/HVBR/HVBR/HOVL/HHOVL	158
	495	PW930	NB/MB/WB/VVBR/OVL	162
DIA				251
DIA.VLC			All	253
WA				224



Flux	CCT	B (mm)
275	FMT/Rose/R	130
295	FR/p930	149
495		



Specifications Philips LED Tracklight GreenSpace Evo Projector White 20.5W 2700lm 41x80D - 830 Warm White

[View Product](#)

General Information

SKU	251905
EAN	8720169590854
Brand	Philips
Manufacturer Name	ST333T 27S/830 PSU WB WH481
Any Lamp all-in warranty	5 Years
Average Lifetime (h)	50000

Technical Information

Technology	LED Integrated
Voltage (V)	220-240
Dimmable	Not Dimmable
Colour Code	830 Warm White
Colour temperature (Kelvin)	3000 Warm White
Colour Rendering (Ra)	80-89
Colour of Light	White
Light colour options	Single Color
Luminous Efficacy (lm/W)	132
Emergency Lighting	No Emergency Unit
Beam Angle (degree)	41x80
Power factor	>0.90

Product Type Category LED Trackspot

Fixture Information

Mounting Method	Rail
Operating Temperature	0 to +25
IP-rating	IP20
Impact Protection (IK)	IK02 - 0.20 joule
Housing	Plastic
Colour of the Fixture	White
Colour of material	White

Dimensions

Length (mm)	158
Width (mm)	92
Height (mm)	190

Sensor Information

Type of sensor No Sensor

Why Any-lamp?

 Order from the **largest lighting specialist** in Europe  **Customised** quotation

 Up to **7 years warranty**  **Easy** return process